



CMD Group
CRM Integration
XML Format Version 1.3
Administrator's Reference



Copyright notice and statement

© 2014 Reed Construction Data

All rights reserved. No part of this document may be copied, photocopied, reproduced, or distributed in any form or by any means without permission in writing from Reed Construction Data, Inc. Notice of liability Information in this document is subject to change without notice. Any software described in this document is furnished under a license agreement and may be used or copied only in accordance with the terms of the agreement.

CMD Group 30 Technology Parkway South Suite 100 Norcross, GA 30092

Publication information

Use the following information when referencing this document:

Document name:	<i>CMD Group CRM Integration XML Format Version 1.3 Administrator's Reference</i>
Publication Date:	October 2014
Revision:	G

Table of Contents

Overview	6
Introduction	6
About this document	6
Who should use this document	6
Accessing the file	6
Understanding the export file	7
NASD values	7
Understanding URL components	7
CRM version 1.3 export schema	7
Example files	8
Using search filters	8
When files are exported	8
Renamed data values	8
Common terms used in this document	9
Xpath and nesting-level notation definitions	9
CRM integration XML format version 1.3 field descriptions	11
Projects	11
/Projects/Project	11
/Valuation	12
/Parameter	13
/DocumentAvailability	15

/ParentCategories/ParentCategory/SubCategories/	16
Category parent/child values	16
/StageComments	18
Stage parent/child values	18
/Address.....	19
/Contracts/Contract.....	19
Companies/Company	21
Classification parent/child values	22
/Companies/Company/Contacts/Contact	26
/Companies/Company/Addresses/Address.....	26
/Companies/Company/Phones/Phone	27
/Companies/Company/Email	27
/Companies/Company/Website	28
/Companies/Company/ParticipantRoles/ParticipantRole	28
/Companies/Company/PlanHolders/PlanHolder	28
/Companies/Company/BidderRoles/BidderRole	28
/Companies/Company/ClassificationTypes/ClassificationType	29
/Companies/CompanySummarizations/CompanySummary	29
/Companies/Company/ParentCompany	30
/Companies/Company/ParentCompany/Phones/Phone	30
/Companies/Company/ParentCompany/ParentCompanyAddress	30
/Users/User/Queries/Query	31
/Users/User/User	31

/UpdateSummarizations/UpdateSummary	31
/PlanSpec/PlanRoom.....	32
/PlanSpec/DocCenterUrl	32
/Details/Detail.....	33
/Materials/Material	33
/RSMaterialDivisions/Division/Material	33
/RSMaterialDivisions/Division/Material/	33
/Notes/Note	34
/List Date.....	34
/ProjectID	34
/Title	35
/Stage	35
/URL.....	35
/UpdateDate.....	36
/ProjectParentID	36
/IsProspective	36
/UpdateText	36
Appendix A – Material Demand CSI codes.....	37
Appendix B –CRM Integration XML format version 1.3 example files	43
Appendix C – CRM Integration XML format version 1.3 export schema	49

Overview

Introduction

The **Insight** CRM integration feature provides you with customized project lead data that you can import into your third-party CRM system.

Once you set up your customized **Insight** search, the results are exported in Extensible Markup Language (XML) format to download each day from the secure CMD-hosted site, accessible using File Transfer Format (FTP). Your search results are updated daily with new projects and continuous updates to projects you are tracking for development.

About this document

This document contains a description of the CRM export XML format file, including the data structure, field descriptions and values, and database sizing recommendations.

Who should use this document

This document is intended for system administrators and other technical personnel for use as a reference for customizing the CRM Integration XML file. Contact CMD Group if you have any questions about the content or use of this document.

Accessing the file

Your customized CRM Integration XML data export file is available for download using FTP each day by 8:00AM Eastern Standard Time. The file is compressed into a .zip format and uses the following naming convention:

DL_<companyname>_XML_YYYYMMDD

Example: The file for April 5, 2015 is named ***DL_BestCompany_20150405***

The file is available on the secure RCD-hosted FTP location at ftp.reeddatalink.com. To access the file for download, you must have the following information.

- your user name, password and file name
- a connection to the Internet
- FTP software on your computer

Your FTP site logon name, password, and file name are all supplied by your CMD Account Manager. You can access your file for two weeks after the posting date on the secure CMD-hosted FTP location, after which time the file is no longer accessible.

Understanding the export file

Introduction

The CRM export file contains all of the information for each project and company included in your export. This section provides information about the contents of the file, URL structure, links to the schema and schema examples, and a brief description of setting up a search for CRM export.

NASD values

CMD is now mapping both U.S. and Canadian construction data to a single common standard, the North American Standard Data (NASD) format. To see a side-by-side comparison of how the data types are now mapped using NASD, [click to download the NASD data matrix in Excel format](#).

Understanding URL components

This section contains a description of how URLs are formatted for the CRM export, depending on the data represented.

Company and Project details

The following two URL represent company and project details, respectively:

- <http://insight.reedconstructiondata.com/.../CompanyDetails/399270/2>
- <http://insight.reedconstructiondata.com/.../ProjectDetails/9209403/2>

In the above examples,

- The numbers in **red** represent the Insight ID for the project or company.
- The numbers in **green** represent country, **1** for U.S. and **2** for Canada.

Project documents

The following is a matching document URL where the number at the end of the line is the query ID value, shown in **magenta**:

<http://insight.reedconstructiondata.com/.../DocumentCenter/9179685/2/61179>

- This URL returns any matching documents for your keyword searches.
- This feature is only available in the CRM Integration 1.3 schema.

CRM version 1.3 export schema

You can view the CRM 1.3 export schema in the following location:

[Appendix C – CRM Integration XML format version 1.3 export schema](#)

Example files

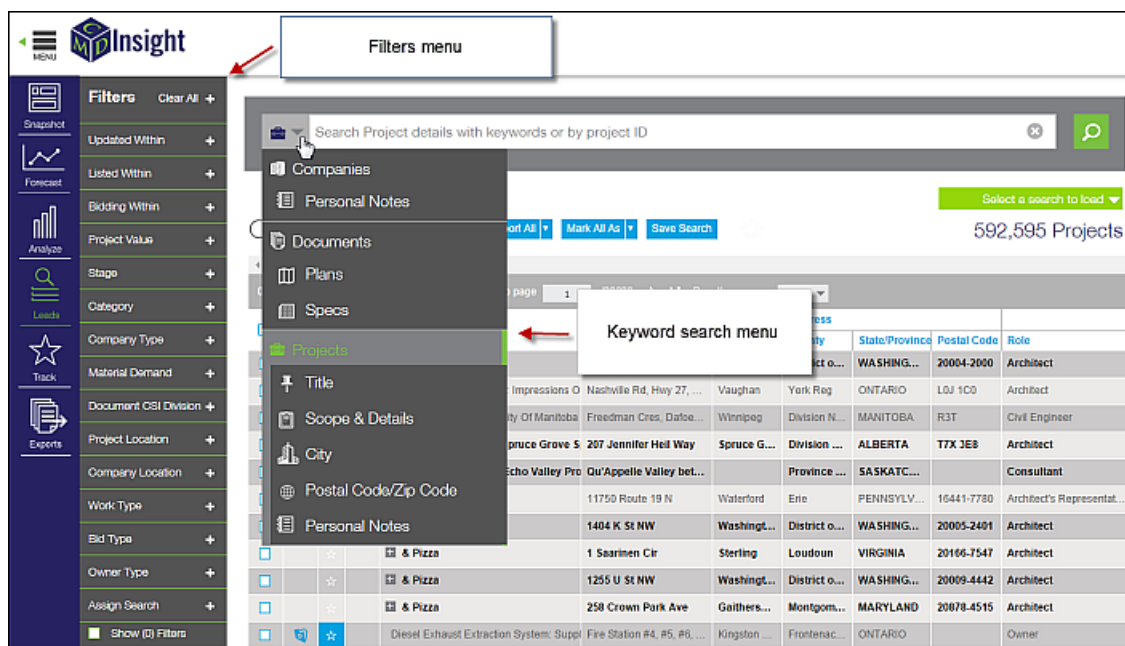
You can view examples of the export file in the following location:

[Appendix B –CRM Integration XML format version 1.3 example files](#)

Using search filters

You can use any of the filters located along the left side of the **Leads** window to set up the criteria for your CRM Integration searches. Additionally, keywords entered in the search bar tile along the top of the window are also valid for CRM Integration searches.

Search filters and options are found in the following locations:



When files are exported

Initially, projects selected for CRM export are included in the next scheduled feed, typically overnight from the day the project is selected. Beyond this initial export, projects are only included in your export when there is a significant update to the project. For information on the frequency of CRM exports, contact your system administrator.

Renamed data values

When mapping your data, you should be aware that some of the data fields for the 1.3 release have been renamed from earlier versions, as shown in the following table.

Former name	New name
Project/Parameters/Parameter/RecordDate	Project/ListDate
Project/Parameters/Parameter/BidDate	/Projects/Project/Contracts/Contract/BidDate
Project/Parameters/Parameter/BidTime	Projects/Project/Contracts/Contract/BidTime

Former name	New name
Project/IsUnverified	Project/IsProspective

Common terms used in this document

The following table contains common terms and definitions used in this document.

Term	Definition
Extensible Markup Language (XML)	XML is a data format for structured document interchange on the Web, allowing users to design a markup language which defines how to describe information in a certain class of documents. XML authors can define customized markup language for several classes of documents and share information between applications. The XML tagging structure allows for simplified manipulation of delivered data and allows the data structure to change without significantly impacting the target application.
File Transfer Protocol (FTP)	File Transfer Protocol (FTP) is a service that supports file transfer between local and remote computers, including the Internet. FTP supports several commands that allow bidirectional transfer of binary and ASCII files between computers. The FTP client is installed with the TCP/IP connectivity utilities.

Xpath and nesting-level notation definitions

The following table contains a description and definition of the X-path and nesting-level notation used in the file.

Xpath and nesting-level notation	
Description	Definition
Attribute	The attribute name. Attributes are used to provide additional information for a XML element.
Type (size)	<p>The data type defines the data type of the field. The length of the field is defined by the data type.</p> <p>Example data types defined in the schema and sample data file include:</p> <ul style="list-style-type: none"> • xs:long • xs:string <p>DB - Defines the length of the xs:string. This may be used for sizing a DB for XML files.</p> <ul style="list-style-type: none"> • xs:date • xs:boolean <p>These data types are defined under the following URL: http://schemas.microsoft.com/BizTalk/2003.</p> <p>Other data types include:</p> <ul style="list-style-type: none"> • dls.Role • dls.SubCategory • dls.Summary

Xpath and nesting-level notation	
	<ul style="list-style-type: none"> • dls.AddressType • dls.PhoneType <p>These data types are defined in the export schema. See Appendix A for more information.</p>
Description	The description of the attribute.
Valid Example/Values	The valid example contains the values for the attribute. Specific values are also included.
Child element	Cross-reference to the child element.



CRM integration XML format version 1.3 field descriptions

Introduction

This section contains a description of the fields used in the CMD Group CRM Integration XML Format version 1.3 export file.

Projects

/Projects/ Definition: Defines the export information.			
Attribute	Data Type	Description	Valid Examples/Values
Version	xs:decimal	Version number of the export file.	Version 1.2.1
Copyright	xs:string	Copyright	
ExportDate	xs:date	CRM export date and time	XML format = YYYY-MM-DD XML example = 2014-09-16
Child Elements	Data Type	Description	Valid Examples/Values

/Projects/Project

/Projects/Project Definition: Defines the project information.			
Attribute	Data Type	Description	Valid Examples/Values
Child Elements		Description	
Valuation		See /Valuation for more information.	
Parameters		See /Parameter for more information.	
DocumentAvailability		See /DocumentAvailability for more information.	
ParentCategories		See /ParentCategories/ParentCategory/SubCategories for more information.	
StageComments		See /StageComments for more information.	
Addresses		See /Address for more information.	
Contracts		See /Contracts/Contract for more information.	
Companies		See Companies/Company for more information.	
Queries		See /Users/User/Queries/Query for more information.	
Users		See /Users/User/User for more information.	
UpdateSummary		See /UpdateSummarizations/UpdateSummary for more information.	
PlanRoom		See /PlanSpec/PlanRoom for more information.	
DocCenterUrl		See /PlanSpec/DocCenterUrl for more information.	
Detail		See /Details/Detail for more information.	

/Projects/Project			
Definition: Defines the project information.			
Attribute	Data Type	Description	Valid Examples/Values
Materials		See /Materials/Material for more information.	
Material		See /RSMaterialDivisions/Division/Materials/Material for more information.	
Materials		See /RSMaterialDivisions/Division/Materials/ for more information.	
Notes		See /Notes/Note for more information.	
ListDate		See /List Date for more information.	
ProjectID		See /ProjectID for more information.	
Title		See /Title for more information.	
Stage		See /Stage for more information.	
URL		See /URL for more information.	
UpdateDate		See /UpdateDate for more information.	
ProjectParentID		See /ProjectParentID for more information.	
IsProspective		See /IsProspective for more information.	
UpdateText		See /UpdateText for more information.	

/Valuation

/Projects/Project/Valuation											
Definition: Defines the valuation for the project.											
Attribute	Data Type	Description	Valid Examples/Values								
ValueType	dls.ValueType	The value of the project.	<table border="1"> <thead> <tr> <th>Value</th> <th>Definition</th> </tr> </thead> <tbody> <tr> <td>Confirmed</td> <td>The project value is confirmed with a source by the RCD Research Team.</td> </tr> <tr> <td>Estimate</td> <td>The project value is estimated by the RCD Research Team.</td> </tr> <tr> <td>Unconfirmed</td> <td>The project value is a best guess by the RCD Research Team.</td> </tr> </tbody> </table>	Value	Definition	Confirmed	The project value is confirmed with a source by the RCD Research Team.	Estimate	The project value is estimated by the RCD Research Team.	Unconfirmed	The project value is a best guess by the RCD Research Team.
Value	Definition										
Confirmed	The project value is confirmed with a source by the RCD Research Team.										
Estimate	The project value is estimated by the RCD Research Team.										
Unconfirmed	The project value is a best guess by the RCD Research Team.										
Currency	XML = dls.Currency DB =	Currency type	Values: <ul style="list-style-type: none"> • U.S = US 								

/Projects/Project/Valuation			
Definition: Defines the valuation for the project.			
Attribute	Data Type	Description	Valid Examples/Values
	VARCHAR(15)		Canada = CAD
ValueType	xs:string dls.ValueType	Value of the project	8800000
Child Elements	Data Type	Description	Valid Examples/Values

/Parameter

/Projects/Project/Parameters/Parameter			
Definition: Defines the parameters for the project.			
Attribute	Data Type	Description	Valid Examples/Values
Ownership	XML = dls.Ownership DB = VARCHAR(180)	Funding type/ownership of the project	Private Provincial Federal Defense
WorkType	XML = dls.WorkType DB = VARCHAR(180)	Development type of the project	New Addition Alterations Engineering
CommenceDate	xs:date	Confirmed or estimated construction start date for the project	XML format = YYYY-MM-DD XML example = 2007-09-16
CompletionDate	xs:date	Estimated end date for the project	XML format = YYYY-MM-DD XML example = 2007-09-16
FloorsAboveGround	xs:integer	Number of floors above ground	Rule: Represents number of floors above ground that may be new or alterations. If an alteration, only the numbers of floors affected by the alteration are listed. For multiple buildings, the tallest structure's numbers of floors are represented. When a project has a development/worktype of addition/alterations, only the addition floors are shown. Any alteration floors, if known, are listed in the project text.
FloorsBelowGround	xs:integer	Number of floors below ground	Rule: Represents number of floors below ground that may be new or alterations. If alterations, only the number of floors affected by

			<p>the alteration are listed, not the total number of floors below ground.</p> <p>If project has a development/worktype of addition/alterations, only the addition floors below ground are listed. The alteration floors below ground, if known, are listed in the project text.</p>
FloorArea	xs:unsignedLong		
SiteArea	xs:unsignedLong	Site area (in acres) involved in the project	Captured in whole numbers only.
ParkingSpaces	xs:long	Number of parking places involved in the project	Rule: If project has a development/worktype of addition/alterations, only the addition parking spaces are listed. The alteration parking spaces, if known, are listed in the project text.
Structures	xs:long	Number of structures involved in the project	Rule: If project has a development/worktype of addition/alterations, only the addition structures are listed. The alteration structures, if known, are listed in the project text.
Units	xs:long	Number of units involved in the project	<p>Rule: If project has a development/worktype of addition/alterations, only the addition units are listed. The alteration units, if known, are listed in the project text.</p> <p>Note: Projects that have units are prisons, hospitals, and condominiums.</p>
MandatoryPreBidConferenceDate	xs:date	The date of the mandatory prebid conference.	
ContractType	XML-dls.ContractType DB = VARCHAR(180)	Contract type of the project	<p>One of the following:</p> <ul style="list-style-type: none"> • General contractor • Construction management • Project management • Design / Build • Trade contract

FloorAreaUnitofMeasure	xs:long MaxLengthValue=255	Denotes square feet as the unit of measurement for the project floor area.	Square Feet
SiteAreaUnitofMeasure	xs:long	Denotes acres as the unit of measurement for project site area.	
GreenBuildingCertification	xs:long	Denotes the Green Building Certification status of the project.	Values: <ul style="list-style-type: none"> • Unknown • Yes • No
LEEDCertificationIntent	xs:long	Denotes the LEED certification status of the project.	Values: <ul style="list-style-type: none"> • Certified • Silver • Gold • Platinum • Unknown
IsSingleTrade	xs:boolean	Indicates if a single trade project. The values are free form text.	Values: TRUE= is single trade FALSE= not single trade
SingleTradeClassification	xs:string	Indicates the type of single trade project.	

/DocumentAvailability

/Projects/Project/DocumentAvailability			
Definition: Defines the availability of documents.			
Attribute	Data Type	Description	Valid Examples/Values
Plans	XML=xs:boolean	Indicates the availability of project documents: available = true not available = false	Addenda="true" Specs="false"
Specs			
Addenda			
Child Elements	Data Type	Description	Valid Examples/Values

/ParentCategories/ParentCategory/SubCategories/

/Projects/Project/SubCategories/SubCategory			
Definition: Defines the parent and child categories of the project.			
Note: See the section for NASD values for information about category / subcategory mapping.			
Attribute	Data Type	Description	Valid Examples/Values
ParentCategory	Xs:string	Parent category for the project.	See the Category parent/child values in the following section for a full list of category values
Child Elements	Data Type	Description	Valid Examples/Values
SubCategory	XML = dls.SubCategory DB = VARCHAR(180)	Subcategory for the project. Limits: <ul style="list-style-type: none"> • U.S. – 3 • Canada – unlimited 	See the Category parent/child values in the following section for a full list of category values

Category parent/child values

The following table contains the *Category* parent and child values.

Category	
Parent	Child
COMMERCIAL	Broadcast Studios
	Laboratories
	Offices / Warehouses
	Offices
	Parking Garages
	Rental Warehouses
	Transportation Terminals
COMMUNITY	Auditoriums
	Clubs, Community Centers
	Libraries
	Museums
	Religious Auditoriums
	Religious Classrooms
	Sports Arenas / Convention Centers
EDUCATIONAL	Athletic Bldgs
	Cafeterias
	Dormitories
	Schools
GOVERNMENT	Courthouses
	Fire and Police Stations
	Government – Misc. Buildings
	Governmental Offices

	Park Buildings
	Post Offices
	Prisons
INDUSTRIAL	Manufacturing
	Miscellaneous Industrial
	Processing Plants
	Warehouses
MEDICAL	Hospitals, Clinics
	Medical Offices
	Nursing Homes
MILITARY	Military – Misc.
	Military Housing
	Military Offices
RESIDENTIAL	Apartments
	Condominiums
	Single Family
	Townhomes
RETAIL	Automotive
	Bank
	Entertainment
	Food Stores
	Hotels
	Restaurants
	Retail Stores
	Shopping Centers
CIVIL	Airport
	Athletic Fields and Courts
	Bridges and Culverts
	Dams and Canals
	Demolition
	Electrical Work
	Flood Control
	Marine Work
	Miscellaneous
	Parks and Landscaping
	Power Plants and Lines
	Railroad and Subway
	Roads
	Sewers and Water Mains
	Swimming Pools
	Tanks

	Tunnels
	Water and Sewage Treatment Plants

/StageComments

/Projects/Project/StageComments			
Definition: Defines the stage comment for the project.			
Attribute	Data Type	Description	Valid Examples/Values
Child Elements	Data Type	Description	Valid Examples/Values
StageComment	XML = dls.StageComment DB = VARCHAR(255)	Stage Comment: Activities of the bid stage projects.	Example for Stage Comment: Add bidders Closing date extended from 2014-09-16

Stage parent/child values

The following table contains a list and description of the *Stage* parent/child values.

Project/Projects.../Stage	Stage Child
PLANNING	Pre-design
	Schematic Design
	Design Development
	Construction Documents
BIDDING	SUBBIDS ASAP
	Biddate Set
POST BID	Bids Closed
	Construction Underway
	General Contractor Award
	Low Bids Announced
	Post Bid
	Subcontractor Awards
	Unit Prices Announced
	Project Cancelled
MISCELLANEOUS	Disqualified Lead
	Bids Closed
	Cancelled
	Duplicate Project

/Address

/Projects/Project/Addresses/Address			
Definition: Defines the address for the project.			
Attribute	Data Type	Description	Valid Examples/Values
ProjectAddressType	XML=dls. AddressType DB = VARCHAR(180)	Address type for the project. There is only one possible value for this type.	Project
Child Elements	Data Type	Description	Valid Examples/Values
AddressLine1	XML = dls.AddressLine DB = VARCHAR(128)	Project address	2468 Montview Drive
AddressLine2	XML = dls.AddressLine DB = VARCHAR(128)	Second line for the address	Not applicable
City	XML = dls.City DB = VARCHAR(50)	City or municipal where the project is located	Talmadge
StateProvince	XML = dls.State DB = VARCHAR(50)	Abbreviation representing the state or province of the project	GA
ZipPostalCode	XML = dls.Zip DB = VARCHAR(20)	Postal or zip code for project	30033
County	XML = dls.County DB = VARCHAR(60)	Name representing the county for the project	Fulton
CountryRegion	XML = dls.Country DB = VARCHAR(120)	Name representing the country or region for the project	US Canada

/Contracts/Contract

/Projects/Project/Contracts/Contract			
Definition: Defines the bid contract conditions for a project. For a given project, it is possible to have multiple bid contract conditions. For U.S data, the general contractor bid date is used as the project's main bid date.			
Attribute	Data Type	Description	Valid Examples/Values
BidDate	xs:date	Bid date for a contract Note: This value is formerly <i>Project/Parameters/Parameter/BidDate</i>	XML format = YYYY-MM-DD XML example = 2007-09-16
Conditions	XML = dls.Conditions (text)	This is the foremost contract condition that must be met by bidders so that they may bid on a project.	Not applicable

/Projects/Project/Contracts/Contract			
Definition: Defines the bid contract conditions for a project. For a given project, it is possible to have multiple bid contract conditions. For U.S data, the general contractor bid date is used as the project's main bid date.			
Attribute	Data Type	Description	Valid Examples/Values
Bonding	XML = dls.Bonding DB = VARCHAR(180)	Bonded and insured for the project. It is the general contractor insurance certificate. Bonding covers coverage for financial risk or loss on a project. Bonding refers to a type of surety guarantee that a specific project will be financially covered if performance is not complete or satisfactory.	Not applicable
PlansFrom	XML = dls.Role DB = VARCHAR(180)	The source of project documents.	
BidTo	XML = dls.Role DB = VARCHAR(180)	Project role that is accepting bids on the project contract	Owner See dls:Role line in the export schema for a complete list of the stage examples.
BidTime	XML = dls.BidTime DB = VARCHAR(120)	The time that bids are due for a project contract Note: This is formerly <i>Project/Parameters/Parameter/BidTime</i>	
			XML example = 12:00
BidDateAsap	xs:boolean	Not applicable	Not applicable
BidDateHold	xs:boolean	When the flag is set, the project has been placed on an indefinite hold.	If the flag is: TRUE = BidDateHold is set. FALSE = BidDateHold is not set.
Classification	XML = dls.Role DB = VARCHAR(180)	How the company is classified.	Architect See dls:Role line in the export schema for a complete list of the role examples.
Invitation	XML = dls.InvitationNumber DB = VARCHAR(50)	Unique invitation number assigned to the project for bidding purposes.	W912HY-04-B-0026 3819
BidType	XML = dls.BidType DB = VARCHAR(180)	Type of contracting method being used in the construction of the building.	Open Bidding Invited Bidding Prequalified Bidders Negotiated
Child Elements	Data Type	Description	Valid Examples/Values

Companies/Company

Notes:

- To determine the specific company role for a project, the value in the **Role** field defines the company role for a project participant. If the **Role** field is populated, the company in question is playing a role for the project. Some of the values for the company role include General Contractor, Owner, and Architect. If the value in the **Role** field is null, the company is not playing a role on the project.
- To derive the Bidders List from a CRM Integration export file, the **BiddingRole** field determines the Bidder's List for a project. All companies with a non-null value in the **BiddingRole** field are a bidder for the project. If the value in the **BiddingRole** field is null, there are no bidders for the project.

/Projects/Project/Companies/Company			
Definition: Defines the company information for a project. Companies listed here are both project participants and bidders.			
Attribute	Data Type	Description	Valid Examples/Values
Role	XML = dls.Role DB = VARCHAR(180)	Role the company is playing on the project Note: The Role, TenderRole, and BiddingRole are all mutually exclusive. You can only select one of these values.	General Contractor See the Classification parent/child values in the following section for more information about Role values. See the Note at the start of this section for more information.
BiddingRole	XML = dls.Role DB = VARCHAR(180)	Role for which the company is bidding on the project The code represents a generic or detailed account of what is involved in the contract. Note: The Role and BiddingRole are mutually exclusive. You can only have one or the other.	
Name	XML = dls.Name DB = VARCHAR(255)	Name of the company	Turner Construction
URL	XML = dls.URL DB = VARCHAR(255)	URL to the Company Detail page for this company	URL format = http://www.reedconnect.com/default.aspx?link=<encrypted string> URL example = http://www.reedconnect.com/default.aspx?link=NSwxNDAwLDEwMDAyNDI3Nzc%3d
LastUpdate	xs:date	Date the company was last updated. The LastUpdate field is the last date that the project was edited. It may not be the last significant update date.	XML format = YYYY-MM-DD XML example = 2006-03-29
CompanyID	xs:long	Unique CMD Connect assigned Company ID.	510975

/Projects/Project/Companies/Company			
Definition: Defines the company information for a project. Companies listed here are both project participants and bidders.			
Attribute	Data Type	Description	Valid Examples/Values
DataSourceID	xs:string		Values: <ul style="list-style-type: none"> • U.S = US • Canada = CAN
UpdateText	xs:string		
Child Elements		Description	Valid Examples/Values
Contact		See /Companies/Company/Contacts/Contact for more information.	
Addresses		See /Companies/Company/Addresses/Address for more information.	
Phones		See /Companies/Company/Phones/Phone for more information.	
Email		See /Companies/Company/Email for more information.	
Website		See /Companies/Company/Website for more information.	
ParticipantRole		See /Companies/Company/ParticipantRoles/ParticipantRole for more information.	
PlanHolders		See /Companies/Company/PlanHolders/PlanHolder for more information.	
BidderRoles		See /Companies/Company/BidderRoles/Bid for more information.	
ClassificationTypes		See /Companies/Company/ClassificationTypes/ClassificationType for more information.	
CompanySummarizations		See /Companies/CompanySummarizations/CompanySummary for more information.	
ParentCompany		See /Companies/Company/ParentCompany for more information.	
Phones		See /Companies/Company/ParentCompany/Phones/Phone for more information.	
ParentCompanyAddress		See /Companies/Company/ParentCompany/ParentCompanyAddress for more information.	

Classification parent/child values

The *Classification* of a company is the function that the company generally performs, and is not necessarily the *Role* that the company plays in the project. The following table contains the parent/child values for *Classification*.

Classification	Child
Parent	Child
ARCHITECT	Architect
	Architect's Representative
	Designer
	Landscape Architect
	Golf Course Architect
	Water Feature Designer
GENERAL CONTRACTOR	General Contractor
	Construction Manager
	Negotiating General Contractor
	Design Build Contractor



Classification	
Parent	Child
BUILDING OWNER: BUILDING USER	Developer
	Owner
	Owner's Rep
	Tenant
ENGINEERS	Acoustical Engineer
	Civil Engineer
	Consultant
	Electrical Engineer
	Engineer
	Food Service Designer
	Geotechnical Consultant
	HVAC Engineer
	Interior Designer
	Landscape Designer
	Mechanical and Electrical Engineer
	Plans Representative
	Plumbing Engineer
	Specification Consultant
Structural Engineer	
EQUIPMENT SUPPLIERS	Construction Equipment
	Fuels
NUMERIC BID PACKAGES	Bid Package 1 ... to.... Bid Package 99
ALPHA BID PACKAGES	Bid Package A ... to.... Bid Package Z
SUBCONTRACTORS – DIVISION 1	Fencing
	Building Maint., Cleanup
	Equip. Rentals, Scaffolding
	Financial Services
	Misc. General Requirements
SUBCONTRACTORS – DIVISION 2	Landscaping
	Foundation Contractor
	Paving
	Demolition



Classification	
Parent	Child
	Asbestos Removal
	Site Work
SUBCONTRACTORS – DIVISION 3	Concrete
	Precast Concrete
	Concrete Forms
	Reinforcing Steel
	Concrete
SUBCONTRACTORS – DIVISION 4	Masonry
	Masonry Restoration
SUBCONTRACTORS – DIVISION 5	Structural Steel
SUBCONTRACTORS – DIVISION 6	Carpentry
SUBCONTRACTORS – DIVISION 7	Waterproofing
	Insulation
	Roofing
SUBCONTRACTORS – DIVISION 8	Doors
	Windows
	Hardware
	Glass
SUBCONTRACTORS – DIVISION 9	Interior Finishes
	Plaster and Stucco
	Drywall
	Tile
	Acoustical Ceilings
	Flooring
	Painting and Wall Coverings
SUBCONTRACTORS – DIVISION 10	Bathroom Partitions and Accessories
	Other Equipment
	Moveable Partitions
	Signage
	Other Equipment
	Window Coverings
SUBCONTRACTORS – DIVISION 11	Bank Equipment



Classification	
Parent	Child
	Laboratory Equipment
	Sewage Treatment Equipment
	Kitchen Equipment
	Medical Equipment
	Athletic Equipment
SUBCONTRACTORS – DIVISION 12	Carpentry
	Window Coverings
	Furniture
	Seating
SUBCONTRACTORS – DIVISION 13	Insulated Cold Storage
	Swimming Pools
	Storage Tanks
SUBCONTRACTORS – DIVISION 14	Elevators and Escalators
	Conveyors
SUBCONTRACTORS – DIVISION 15	Mechanical Contractor
	Plumbing Contractor
	HVAC Contractor
	Refrigeration Contractor
	Temperature Controls
	Fire Sprinklers
	Thermal Insulation
	Sheet Metal
SUBCONTRACTORS – DIVISION 16	Electrical Contractor
	Lighting
	Alarms and Communication
	Electrical Contractor
	Ventilation Contractor
	Heating Contractor
	Fire Protection
MISC NON-ROLE CODES	Contract 1...to... Contract 9
	Contract A... to ... Contract E
	Bidders

/Companies/Company/Contacts/Contact

Note: The address and phone number data for a contact can be derived from the *company* section.

/Projects/Project/Companies/Company/Contacts/Contact			
Definition: Defines the contact information for the company.			
Attribute	Data Type	Description	Valid Examples/Values
Name	XML = dls.ContactName DB = VARCHAR(100)	Name of the contact associated with the company for this project.	John Smith
ContactID	xs:long	Unique system assigned Contact ID	386560
Child Elements	Data Type	Description	Valid Examples/Values
Email	XML=dls.Email	The email for the company.	These three values are set to 0, are nullable in the database and do not require a value.
PhoneNumber	XML=dls.PhoneNumber	The phone number for the company.	
Extension	xs:string	The extension of the phone number for the company.	

/Companies/Company/Addresses/Address

/Projects/Project/Companies/Company/Addresses/Address			
Definition: Defines the company address.			
Attribute	Data Type	Description	Valid Examples/Values
Address Type	XML = dls.AddressType DB = VARCHAR(180)	Address type for the company	Street Mailing Default = Street
Child Elements	Data Type	Description	Valid Examples/Values
AddressLine1	XML = dls.AddressLine DB = VARCHAR(128)	Company address	283 Main Street
AddressLine2	XML = dls.AddressLine DB = VARCHAR(128)	Second line for the address	Not applicable
City	XML = dls.City DB = VARCHAR(50)	City or municipal for the company	Atlanta
StateProvince	XML = dls.State DB = VARCHAR(50)	Abbreviation representing the state or province for the company	GA
ZipPostalCode	XML = dls.Zip DB =	Postal or zip code for the company. Note that the default setting is zero	30309

/Projects/Project/Companies/Company/Addresses/Address			
Definition: Defines the company address.			
	VARCHAR(20)	(0) and some values for this field can be blank.	
County	XML = dls.County DB = VARCHAR(60)	Name representing the county for the company	Fulton
CountryRegion	XML = dls:Country DB = VARCHAR(120)	Name representing the country or region for the company	US

/Companies/Company/Phones/Phone

/Projects/Project/Companies/Company/Phones/Phone			
Definition: Defines the phone information for companies associated with a project.			
Attribute	Data Type	Description	Valid Examples/Values
PhoneType	XML = dls.PhoneType DB = VARCHAR(180)	Phone type for the company	Example for Phone Type: <ul style="list-style-type: none"> • Company Phone Number • Contact Phone Number • Fax Phone Number • Cell Phone Number • Home Phone Number • Other Phone Number
Child Elements	Data Type	Description	Valid Examples/Values
Phone	XML = dls.PhoneNumber DB = VARCHAR(100)	Phone number of the company	770-000-0000

/Companies/Company/Email

/Projects/Project/Companies/Company/Email			
Definition: Defines the email for the company associated with a project.			
Attribute	Data Type	Description	Valid Examples/Values
Email	XML = dls.Email	Email for the company	
Child Elements	Data Type	Description	Valid Examples/Values

/Companies/Company/Website

/Projects/Project/Companies/Company/Website			
Definition: Defines the website address for the company associated with a project.			
Attribute	Data Type	Description	Valid Examples/Values
Website	XML=dls.URL	The web address for the company.	
Child Elements	Data Type	Description	Valid Examples/Values

/Companies/Company/ParticipantRoles/ParticipantRole

/Projects/Project/Companies/Company/ParticipantRoles/ParticipantRole			
Definition: Defines the company role associated with a project.			
Attribute	Data Type	Description	Valid Examples/Values
RoleClassification		The role classification for the company.	
ContactName	Type=xs:string	The name of the contact person for the company.	
Child Elements	Data Type	Description	Valid Examples/Values

/Companies/Company/PlanHolders/PlanHolder

/Projects/Project/Companies/Company/PlanHolders/PlanHolder			
Definition: Defines the role associated with the project plan holder.			
Attribute	Data Type	Description	Valid Examples/Values
RoleClassification		The role classification for the plan holder.	
ContactName	Type=xs:string	The name of the plan holder contact person for the company.	
Child Elements	Data Type	Description	Valid Examples/Values

/Companies/Company/BidderRoles/BidderRole

Note: Bidding information must be cross-referenced with the BiddingRole field to determine the BidValue, BidRank, BidWithdrawDate and BidCreateDate for each bidding company.

/Projects/Project/Companies/Company/BidderRoles/BidderRole			
Definition: Defines the bid information for all bidding companies.			
Attribute	Data Type	Description	Valid Examples/Values
BidderClassification	xs:string	Classification of the bidder.	

BidValue	XML = dls.Currency DB = VARCHAR(15)	Amount of the bid submitted by the bidder	3344550
BidRank	xs:unsignedInt	Reflects the bid value order from lowest to highest where the lowest = 1.	1, 2, 3
BidWithdrawDate	xs:date	Not applicable	Not applicable
BidCreateDate	xs:date		
Child Elements	Data Type	Description	Valid Examples/Values

/Companies/Company/ClassificationTypes/ClassificationType

/Projects/Project/Companies/Company/ClassificationsTypes/ClassificationType			
Definition: Defines the classification type of the Company.			
Attribute	Data Type	Description	Valid Examples/Values
ClassificationType	XML = dls.ClassificationType DB = VARCHAR(180)	The company's type of business, including the classification of the services delivered in the market.	Accommodation/Hospitality Utilities Municipal Govt Services See dls:ClassificationType line in the export schema for a complete list of the stage examples.
Child Elements	Data Type	Description	Valid Examples/Values
Rank	xs: unsignedInt	Ranking of the subcategory classification representing the proportion of the end use of project.	1 2
Type	XML = dls.ClassificationType DB = VARCHAR(180)	Service provided by the organization.	Public Owner See dls:ClassificationType line in the export schema for a complete list of the stage examples.

/Companies/CompanySummarizations/CompanySummary

/Projects/Project/Companies/Company/CompanySummarizatons/CompanySummary			
Attribute	Data Type	Description	Valid Examples/Values
CompanySummaryDate	xs:date	The date the company merged into the current company.	2009-02-26
Summary	XML = dls.Summary DB=VARCHAR(255)	Lists companies that have merged into the current company.	Company merged: 999999 BEST ARCHITECTS
Child Elements	Data Type	Description	Valid Examples/Values



/Companies/Company/ParentCompany

/Projects/Project/Companies/Company/ParentCompany			
Attribute	Data Type	Description	Valid Examples/Values
Child Elements	Data Type	Description	Valid Examples/Values
DataSource	xs:string		US
CompanyId	xs:string		1000240000
CompanyType	xs:string	The primary role of the company	General Contractor
CompanyHierarchyType	xs:string		HQ
Name	xs:string	The name of the company	
Phones	See /ParentCompany/Phones for more information.		
Email	dls.Email		email.name@business.com
Website	dls.URL		www.biz.com
ParentCompanyAddress	See /ParentCompany/ParentCompanyAddress for more information.		

/Companies/Company/ParentCompany/Phones/Phone

/Projects/Project/Companies/Company/ParentCompany/Phones/Phone			
Attribute	Data Type	Description	Valid Examples/Values
PhoneType	dls.PhoneType		Phone Fax
Child Elements	Data Type	Description	Valid Examples/Values
PhoneNumber	dls.PhoneNumber	Parent company phone number	4011011010

/Companies/Company/ParentCompany/ParentCompanyAddress

/Projects/Project/Companies/Company/ParentCompany/ParentCompanyAddress			
Definition: Defines the address of the parent company.			
Attribute	Data Type	Description	Valid Examples/Values
Child Elements	Data Type	Description	Valid Examples/Values
AddressLine1	dls.AddressLine	The first line address for the company.	26 College Drive
AddressLine2	dls.AddressLine	The second address line for the company.	Suite 101
City	dls.City	The city for the company.	Decatur
State	dls.State	The state for the company.	GA
PostalCode	dls.PostalCode	The postal code for the company.	03301-7407
CountyName	dls.CountyName	The country for the company.	Dekalb
Country	dls.Country	The country for the company.	US

/Users/User/Queries/Query

/Projects/Project/Users/User/Queries/Query			
Definition: Defines the			
Attribute	Data Type	Description	Valid Examples/Values
QueryID	xs:string	System generated query ID #.	100
QueryName	xs:string	User name for search	MyProjectConcreteSearch
DocCenterURL	dls.URL	URL location in Document Center	
Child Elements	Data Type	Description	Valid Examples/Values

/Users/User/User

/Projects/Project/Users/User			
Definition: Defines the			
Attribute	Data Type	Description	Valid Examples/Values
UserID	xs:string	System ID of user.	
UserName	xs:string	Login/email address of user	Name@biz.com
UserFullName	xs:string	First and last name of user	Ben Smith
ProjectFlaggedforExport	xs:boolean XML = dls.Summary DB = VARCHAR(255)	Identifies what has been updated since the last export.	An example for the summary is New Project was Found.
Child Elements	Data Type	Description	Valid Examples/Values

/UpdateSummarizations/UpdateSummary

/Projects/Project/UpdateSummarizations/UpdateSummary			
Definition: Defines the update summary information or project history for a project.			
Attribute	Data Type	Description	Valid Examples/Values
UpdateSummaryDate	xs:date	Identifies the update summary date for a project.	XML format = YYYY-MM-DD XML example = 2006-03-29
Summary	XML = dls.Summary DB = VARCHAR(255)	Identifies what has been updated since the last export.	Plans were added / updated.
Child Elements	Data Type	Description	Valid Examples/Values

/PlanSpec/PlanRoom

/Projects /Project/PlanSpec/PlanRoom			
Definition: Defines the plans and specifications information for a project.			
Attribute	Data Type	Description	Valid Examples/Values
Bin	xls:string	The type of document	Plans
Name	XML=dls.PlanRoom	The name of the plan/spec.	Alberta Plan Room
URL	XML = dls.URL DB = VARCHAR(255)	URL to the Plans and Specs for this project	URL format = http://www.reedconnect.com/default.aspx?link=<encrypted string> URL example = http://www.reedconnect.com/default.aspx?link=NSwxNDAwLDEwMDAyNDI3Nzc%3d
Child Elements	Data Type	Description	Valid Examples/Values

/PlanSpec/DocCenterUrl

/Projects /Project/PlanSpec/DocCenterURL			
Definition: Defines the URL for the Document Center location of the plans and specs.			
Attribute	Data Type	Description	Valid Examples/Values
Deposit	xs:string	Deposit and refund information for the project	May be required.
URL	XML = dls.URL DB = VARCHAR(255)	URL to the Plans and Specs page for this project	URL format = http://www.reedconnect.com/default.aspx?link=<encrypted string> URL example = http://www.reedconnect.com/default.aspx?link=NSwxNDAwLDEwMDAyNDI3Nzc%3d
From	XML = dls.Role DB = VARCHAR(180)	The project role that is distributing plans on the project contract	Architect Owner See dls:Role line in the export schema for a complete list of the stage examples.
Child Elements	Data Type	Description	Valid Examples/Values

/Details/Detail

/Projects/Project/Details/Detail			
Definition: Defines the project details information for a project.			
Attribute	Data Type	Description	Valid Examples/Values
DetailType	XML = dls.DetailType DB = VARCHAR(180)	Code representing the detail information reported on a project Note: This value combines the values <i>DetailText</i> and <i>DetailType</i> from the previous CRM release.	<ul style="list-style-type: none"> • Project • Status • Notes
Child Elements	Data Type	Description	Valid Examples/Values

/Materials/Material

/Projects/Project/Materials/Material			
Definition: Defines the materials or Master Format CSI divisions for a project.			
Attribute	Data Type	Description	Valid Examples/Values
Code	xs:long	MasterFormat code representing materials involved in the project.	33
Child Elements	Data Type	Description	Valid Examples/Values

/RSMeansMaterialDivisions/Division/Materials/Material

/Projects/Project/RSMeansMaterialDivisions/Division/Materials/Material			
Definition: Defines the RSMeans Material Division numbers associated with the project.			
Attribute	Data Type	Description	Valid Examples/Values
Code	xs:long	The code for the material	347
Child Elements	Data Type	Description	Valid Examples/Values

/RSMeansMaterialDivisions/Division/Materials/

/Projects/Project/RSMeansMaterialDivisions/Division/Materials			
Definition: Defines the RSMeans Material Division information associated with the project.			
Attribute	Data Type	Description	Valid Examples/Values
Description	XML = dls.Description	The description of the material. For a list of RSMeans Material names and codes, see Appendix A – Material Demand CSI codes	Concrete
Code	xs:long	The code for the material	3
MaterialCostValue	xs:decimal	The total cost minus installation cost.	030212
InstallationCostValue	xs:decimal	The cost of the installation.	0.0305



TotalCostValue	xs:decimal	The total cost of the item including installation.	0.0520
Child Elements	Data Type	Description	Valid Examples/Values

/Notes/Note

/Projects/Project/Notes			
Definition: Defines the notes section of the project details.			
Attribute	Data Type	Description	Valid Examples/Values
UserID	xs:string	The CDM Id of the user.	System generated name.
UserName	xs:string	The CMD name of the user.	name@business.com
NoteId	xs:string	Numeric ID of the note	12
NoteText	xs:string	The body text of the note.	Great project to follow.
CreateDate	xs:DateTime	The date the note is created	2014-07-18T15:49:40.633
ModifyDate	xs:DateTime	The date of modifications to the note.	
Child Elements	Data Type	Description	Valid Examples/Values

/List Date

/Projects/Project/List Date			
Definition: Defines the unique identity of the project			
Attribute	Data Type	Description	Valid Examples/Values
ListDate	xs:date	Unique system assigned project ID.	2014-08-27
		Note: This value is formerly <i>Project/Parameters/Parameter/RecordDate</i>	
Child Elements	Data Type	Description	Valid Examples/Values

/ProjectID

/Projects/Project/ProjectID			
Definition: Defines the unique identity of the project			
Attribute	Data Type	Description	Valid Examples/Values
ProjectID	xs:long	Unique system assigned project ID	1000015959
Child Elements	Data Type	Description	Valid Examples/Values

/DataSourceID

/Projects/Project/DataSourceID Definition: Defines the name of the project.			
Attribute	Data Type	Description	Valid Examples/Values
DataSourceID	xs:string		
Child Elements	Data Type	Description	Valid Examples/Values

/Title

/Projects/Project/Title Definition: Defines the name of the project.			
Attribute	Data Type	Description	Valid Examples/Values
Title	XML = dls.Title DB = VARCHAR(180)	Title and name of the project record	WATER CONTROL PLANT ALTS: Arlington Water Pollution Control Plant
Child Elements	Data Type	Description	Valid Examples/Values

/Stage

/Projects/Project/Stage Definition: Defines the stage of the project.			
Attribute	Data Type	Description	Valid Examples/Values
Stage	XML = dls.Stage DB = VARCHAR(180)	Stages of planning, bidding, or postbid that the project is in currently	Planning Proposed Pending Role Proposals Due Architect Selection to Begin Master Planning Conceptual Drawings
Child Elements	Data Type	Description	Valid Examples/Values

/URL

/Projects/Project/Stage Definition: Defines the URL for the project listing in Insight.			
Attribute	Data Type	Description	Valid Examples/Values
URL	XML = dls.URL DB = VARCHAR(255)	URL to the Project Detail page for this project	URL format = http://www.reedconnect.com/default.aspx?link=<encrypted string> URL example = http://www.reedconnect.com/d

			efault.aspx?link=NSwxNDawLDEwMDAyNDI3Nzc%3d
Child Elements	Data Type	Description	Valid Examples/Values

/UpdateDate

/Projects/Project/UpdateDate			
Definition: Defines the date the project listing was last updated.			
Attribute	Data Type	Description	Valid Examples/Values
UpdateDate	xs:date	Date a particular project was last updated	XML format = YYYY-MM-DD XML example = 2007-09-16
Child Elements	Data Type	Description	Valid Examples/Values

/ProjectParentID

/Projects/Project/ProjectParentID			
Definition: Defines the ID of the parent project to the current project.			
Attribute	Data Type	Description	Valid Examples/Values
ProjectParentID	xs:long	ID of the project parent that is related to this project	9058762
Child Elements	Data Type	Description	Valid Examples/Values

/IsProspective

This indicates if a project has been verified by the RCD source management team. Projects in this category have not been verified but are included here for prospective use.

/Projects/Project/IsProspective			
Attribute	Data Type	Description	Valid Examples/Values
IsProspective	xs:boolean	This is formerly: <i>Project/IsUnverified</i>	IsProspective=TRUE
Child Elements	Data Type	Description	Valid Examples/Values

/UpdateText

/Projects/Project/UpdateText			
Attribute	Data Type	Description	Valid Examples/Values
UpdateText	xs:string	The most recent information on a project. Are concatenated when multiple updates are present.	
Child Elements	Data Type	Description	Valid Examples/Values

Appendix A – Material Demand CSI codes

Introduction

This section contains a list of the CSI codes and descriptions used in the Material Demand project cost models.

CSI Code	Description
121	Allowances
311	Concrete Forming
315	Concrete Accessories
321	Reinforcement Bars
322	Fabric And Grid Reinforcing
323	Stressed Tendon Reinforcing
330	Cast-In-Place Concrete
331	Structural Concrete
335	Concrete Finishing
339	Concrete Curing
341	Precast Structural Concrete
345	Precast Architectural Concrete
347	Site-Cast Concrete
382	Concrete Boring
401	Maintenance Of Masonry
405	Common Work Results For Masonry
421	Clay Unit Masonry
422	Concrete Unit Masonry
427	Multiple-Wythe Unit Masonry
443	Stone Masonry
505	Common Work Results For Metals
512	Structural Steel Framing
514	Structural Aluminum Framing
521	Steel Joist Framing
531	Steel Decking
541	Structural Metal Stud Framing
542	Cold-Formed Metal Joist Framing
551	Metal Stairs
552	Metal Railings
573	Decorative Metal Railings
605	Common Work Results For Wood, Plastics, And Composites

CSI Code	Description
611	Wood Framing
613	Heavy Timber Construction
615	Wood Decking
616	Sheathing
617	Shop-Fabricated Structural Wood
618	Glued-Laminated Construction
622	Millwork
625	Prefinished Paneling
643	Wood Stairs And Railings
648	Wood Frames
721	Thermal Insulation
722	Roof And Deck Insulation
724	Exterior Insulation And Finish Systems
725	Weather Barriers
726	Vapor Retarders
731	Shingles And Shakes
742	Wall Panels
746	Siding
751	Built-Up Bituminous Roofing
753	Elastomeric Membrane Roofing
754	Thermoplastic Membrane Roofing
761	Sheet Metal Roofing
765	Flexible Flashing
771	Roof Specialties
772	Roof Accessories
781	Applied Fireproofing
791	Preformed Joint Seals
792	Joint Sealants
811	Metal Doors And Frames
812	Metal Frames
813	Metal Doors
814	Wood Doors
832	Sliding Glass Doors
833	Coiling Doors And Grilles
834	Special Function Doors
836	Panel Doors
841	Entrances And Storefronts
842	Entrances
843	Storefronts
851	Metal Windows
852	Wood Windows

CSI Code	Description
856	Special Function Windows
862	Unit Skylights
871	Door Hardware
881	Glass Glazing
884	Plastic Glazing
922	Supports For Plaster And Gypsum Board
923	Gypsum Plastering
924	Cement Plastering
929	Gypsum Board
930	Tiling
951	Acoustical Ceilings
953	Acoustical Ceiling Suspension Assemblies
963	Masonry Flooring
964	Wood Flooring
965	Resilient Flooring
966	Terrazzo Flooring
967	Fluid-Applied Flooring
968	Carpeting
969	Access Flooring
972	Wall Coverings
991	Painting
993	Staining And Transparent Finishing
996	High-Performance Coatings
1011	Visual Display Units
1013	Directories
1021	Compartments And Cubicles
1028	Toilet, Bath, And Laundry Accessories
1044	Fire Protection Specialties
1051	Lockers
1055	Postal Specialties
1057	Wardrobe And Closet Specialties
1111	Vehicle Service Equipment
1112	Parking Control Equipment
1113	Loading Dock Equipment
1117	Teller And Service Equipment
1119	Detention Equipment
1123	Commercial Laundry And Dry Cleaning Equipment
1127	Photographic Processing Equipment
1131	Residential Appliances
1141	Foodservice Storage Equipment
1144	Food Cooking Equipment



CSI Code	Description
1146	Food Dispensing Equipment
1147	Ice Machines
1148	Cleaning And Disposal Equipment
1152	Audio-Visual Equipment
1153	Laboratory Equipment
1166	Athletic Equipment
1167	Recreational Equipment
1171	Medical Sterilizing Equipment
1176	Operating Room Equipment
1232	Manufactured Wood Casework
1235	Specialty Casework
1236	Countertops
1246	Furnishing Accessories
1256	Institutional Furniture
1263	Stadium And Arena Seating
1311	Swimming Pools
1318	Ice Rinks
1321	Controlled Environment Rooms
1324	Special Activity Rooms
1328	Athletic And Recreational Special Construction
1334	Fabricated Engineered Structures
1342	Building Modules
1421	Electric Traction Elevators
1424	Hydraulic Elevators
1428	Elevator Equipment And Controls
1431	Escalators
1445	Vehicle Lifts
2105	Common Work Results For Fire Suppression
2111	Facility Fire-Suppression Water-Service Piping
2112	Fire-Suppression Standpipes
2113	Fire-Suppression Sprinkler Systems
2131	Centrifugal Fire Pumps
2205	Common Work Results For Plumbing
2207	Plumbing Insulation
2211	Facility Water Distribution
2213	Facility Sanitary Sewerage
2214	Facility Storm Drainage
2215	General Service Compressed-Air Systems
2233	Electric Domestic Water Heaters
2234	Fuel-Fired Domestic Water Heaters
2241	Residential Plumbing Fixtures

CSI Code	Description
2242	Commercial Plumbing Fixtures
2243	Healthcare Plumbing Fixtures
2247	Drinking Fountains And Water Coolers
2262	Vacuum Systems For Laboratory And Healthcare Facilities
2263	Gas Systems For Laboratory And Healthcare Facilities
2266	Chemical-Waste Systems For Lab. And Healthcare Facilities
2305	Common Work Results For HVAC
2307	HVAC Insulation
2309	Instrumentation And Control For HVAC
2311	Facility Fuel Piping
2312	Facility Fuel Pumps
2313	Facility Fuel-Storage Tanks
2321	Hydronic Piping And Pumps
2331	HVAC Ducts And Casings
2333	Air Duct Accessories
2334	HVAC Fans
2335	Special Exhaust Systems
2336	Air Terminal Units
2337	Air Outlets And Inlets
2338	Ventilation Hoods
2351	Breechings, Chimneys, And Stacks
2352	Heating Boilers
2357	Heat Exchangers For HVAC
2362	Packaged Compressor And Condenser Units
2364	Packaged Water Chillers
2365	Cooling Towers
2373	Indoor Central-Station Air-Handling Units
2374	Packaged Outdoor HVAC Equipment
2381	Decentralized Unitary HVAC Equipment
2382	Convection Heating And Cooling Units
2383	Radiant Heating Units
2391	Prefabricated Equipment Supports
2605	Common Work Results For Electrical
2609	Instrumentation And Control For Electrical Systems
2622	Low-Voltage Transformers
2624	Switchboards And Panelboards
2627	Low-Voltage Distribution Equipment
2628	Low-Voltage Circuit Protective Devices
2629	Low-Voltage Controllers
2632	Packaged Generator Assemblies
2633	Battery Equipment

CSI Code	Description
2636	Transfer Switches
2651	Interior Lighting
2661	Lighting Systems And Accessories
2711	Communications Equipment Room Fittings
2715	Communications Horizontal Cabling
2741	Audio-Video Systems
2751	Distributed Audio-Video Communications Systems
2753	Distributed Systems
2831	Fire Detection And Alarm
3106	Schedules For Earthwork
3122	Grading
3123	Excavation And Fill
3162	Driven Piles



Appendix B –CRM Integration XML format version 1.3 example files

Introduction

This section contains an example of the CRM Integration XML format 1.3 file populated with sample customer data.

```
<?xml version="1.0" encoding="utf-8"?>
<Projects xmlns="http://insight.reedconstructiondata.com/schemas/schDataLinkConfV1.3.xsd" ExportDate="2014-08-28" Copyright="© 2014 Reed Construction Data Inc." Version="1.3">
<Project ProjectID="9209399" DataSourceID="CAN" Title="Rehabilitation Centre Alts: Centre montréalais de réadaptation" Stage="Biddate Set"
URL="http://insight.reedconstructiondata.com/SingleSignOn/ProjectDetails/9209399/2/" UpdateDate="2014-08-28">
  <Valuation Value="150000.00" Currency="CAD" ValueType="Staff estimate" />
  <Parameters>
    <Parameter Ownership="City" WorkType="Alteration" CommenceDate="2014-09-05" MandatoryPreBidConferenceDate="2014-09-03" ContractType="Trade
ContractTrade Contract" />
  </Parameters>
  <DocumentAvailability Plans="false" Specs="false" Addenda="false" />
  <ParentCategories>
    <ParentCategory Name="COMMERCIAL">
      <SubCategories>
        <SubCategory>Laboratories</SubCategory>
      </SubCategories>
    </ParentCategory>
    <ParentCategory Name="MEDICAL">
      <SubCategories>
        <SubCategory>Hospitals, Clinics</SubCategory>
        <SubCategory>Medical Offices</SubCategory>
        <SubCategory>Nursing Homes</SubCategory>
      </SubCategories>
    </ParentCategory>
  </ParentCategories>
  <StageComments>
    <StageComment>Tenders Due</StageComment>
  </StageComments>
  <Addresses>
    <Address ProjectAddressType="Project">
      <AddressLine1>5300 ch de Chambly</AddressLine1>
      <AddressLine2 />
      <City>St-Hubert</City>
      <StateProvince>QC</StateProvince>
      <ZipPostalCode>J3Y 3N7</ZipPostalCode>
      <County>Rivière-du-Loup, comté</County>
      <CountryRegion>Canada</CountryRegion>
    </Address>
  </Addresses>
  <Contracts>
    <Contract BidDate="2014-09-23" BidsTo="Owner" BidTime="14:00" BidDateAsap="false" BidDateHold="false" Classification="Roofing" Invitation="CMR-C06-0822"
BidType="Open Bidding" />
  </Contracts>
</Project>
</Projects>
```

```

</Contracts>
<Companies>
  <Company Role="Owner" Name="Ctre Montérégien Réadaptation" URL="http://insight.reedconstructiondata.com/SingleSignOn/CompanyDetails/399270/2"
  LastUpdate="2014-08-28" CompanyID="399270" DataSourceID="CAN">
    <Contacts>
      <Contact Name="Joanne Léonard" ContactID="A82EBEFC-2DFA-11E4-9A8B-5FCE069E6E5C" />
    </Contacts>
    <Addresses>
      <Address AddressType="Street Address">
        <AddressLine1>5300 ch de Chambly</AddressLine1>
        <AddressLine2 />
        <City>St-Hubert</City>
        <StateProvince>QC</StateProvince>
        <ZipPostalCode>J3Y 3N7</ZipPostalCode>
        <County>Champlain, comté</County>
        <CountryRegion>Canada</CountryRegion>
      </Address>
    </Addresses>
    <Phones>
      <Phone PhoneType="Company Phone Number">450 676-7447</Phone>
      <Phone PhoneType="Fax Phone Number">450 676-0047</Phone>
    </Phones>
    <ParticipantRoles>
      <ParticipantRole RoleClassification="Owner" ContactName="Joanne Léonard" />
    </ParticipantRoles>
  </Company>
</Companies>
<Users>
  <User UserId="abcf997f-30d2-4f96-a5c8-7747711a817a" UserName="johndatalink" UserFullName="John Hendrix" ProjectFlaggedForExport="false">
    <Queries>
      <Query QueryId="639033" QueryName="alcotex"/>
    </Queries>
  </User>
</Users>
<Details>
  <Detail DetailType="Scope"><![CDATA[Medical bldgs; roof and awnings repair (Wing C). ]]></Detail>
  <Detail DetailType="Contract Conditions"><![CDATA[Documents available through tel: 1-866-669-7326 or at 514 856-6600. TENDER DEPOSIT: 10% bid bond or 5%
  cert cheque. MANDATORY SITE VISIT: September 3 at 13:30 Contractors can bid only if their principal place of business is in Québec or, when an intergovernmental agreement is
  applicable, in Québec or in a province or territory under that agreement, and if they possess a license required under the bldg law (RSQ c B-1.1).]]></Detail>
</Details>
<Notes />
<ListDate>2014-08-27</ListDate>
</Project>
<Project ProjectID="9209403" DataSourceID="CAN" Title="Townhouses, Condominium, Apartment Building: Discovery Ridge" Stage="Pre-Design"
  URL="http://insight.reedconstructiondata.com/SingleSignOn/ProjectDetails/9209403/2" UpdateDate="2014-08-28">
  <Valuation Value="7800000.00" Currency="CAD" ValueType="Staff estimate" />
  <Parameters>
    <Parameter Ownership="Private" WorkType="New" FloorArea="60000" Structures="5" Units="51" ContractType="General contractGeneral contract"
  </Parameters>

```

```

FloorAreaUnitofMeasure="square feet" />
  </Parameters>
  <DocumentAvailability Plans="false" Specs="false" Addenda="false" />
  <ParentCategories>
    <ParentCategory Name="EDUCATIONAL">
      <SubCategories>
        <SubCategory>Dormitories</SubCategory>
      </SubCategories>
    </ParentCategory>
    <ParentCategory Name="MEDICAL">
      <SubCategories>
        <SubCategory>Nursing Homes</SubCategory>
      </SubCategories>
    </ParentCategory>
    <ParentCategory Name="MILITARY">
      <SubCategories>
        <SubCategory>Military Housing</SubCategory>
      </SubCategories>
    </ParentCategory>
    <ParentCategory Name="RESIDENTIAL">
      <SubCategories>
        <SubCategory>Apartments</SubCategory>
        <SubCategory>Condominiums</SubCategory>
        <SubCategory>Townhomes</SubCategory>
      </SubCategories>
    </ParentCategory>
  </ParentCategories>
  <StageComments>
    <StageComment>Contemplated</StageComment>
  </StageComments>
  <Addresses>
    <Address ProjectAddressType="Project">
      <AddressLine1>Wheeler's Road and Corporal Pinksen Drive</AddressLine1>
      <AddressLine2 />
      <City>Corner Brook</City>
      <StateProvince>NL</StateProvince>
      <ZipPostalCode>A2H</ZipPostalCode>
      <County>Division No 5</County>
      <CountryRegion>Canada</CountryRegion>
    </Address>
  </Addresses>
  <Companies>
    <Company Role="Owner" Name="Sleepy Cove Developments" URL="http://insight.reedconstructiondata.com/SingleSignIn/CompanyDetails/867226/2"
    LastUpdate="2014-08-28" CompanyID="867226" DataSourceID="CAN">
      <Contacts>
        <Contact Name="Trina Burden" ContactID="686A1A5C-24A7-11E4-A9FC-57A2069E6E5C" />
      </Contacts>
    </Companies>
  </Addresses>

```

```

        <Address AddressType="Street Address">
            <AddressLine1>8 Gullage Ave</AddressLine1>
            <AddressLine2 />
            <City>Corner Brook</City>
            <StateProvince>NL</StateProvince>
            <ZipPostalCode>A2H 6H6</ZipPostalCode>
            <County>Division No 5</County>
            <CountryRegion>Canada</CountryRegion>
        </Address>
    </Addresses>
    <Phones>
        <Phone PhoneType="Company Phone Number">709 634-9705</Phone>
    </Phones>
    <ParticipantRoles>
        <ParticipantRole RoleClassification="Owner" ContactName="Trina Burden" />
    </ParticipantRoles>
</Company>
</Companies>
<Users>
    <User UserId="abcf997f-30d2-4f96-a5c8-7747711a817a" UserName="johndatalink" UserFullName="John Hendrix" ProjectFlaggedForExport="false">
        <Queries>
            <Query QueryId="639033" QueryName="alcotex"/>
        </Queries>
    </User>
</Users>
<Details>
    <Detail DetailType="Scope"><![CDATA[Apartment bldgs; new residential development to include eleven townhouse units in blocks of 3; a 40-unit condominium; and an apartment building (scope yet to be defined). ]]></Detail>
    <Detail DetailType="Status"><![CDATA[Project is preliminary. Early planning is underway in-house. Construction of the townhouse units may proceed mid-2015, pending sales. Scope of work and schedules for the condominium development and apartment building are yet to be finalized. Further update spring 2015.]]></Detail>
    <Detail DetailType="Notes"><![CDATA[http://discoveryridgen.ca.]]></Detail>
</Details>
<RSMaterialDivisions>
    <Division Description="Concrete" Code="3" MaterialCostValue="165360.00" InstallationCostValue="237900.00" TotalCostValue="403260.00">
        <Material Code="311">Concrete Forming</Material>
        <Material Code="315">Concrete Accessories</Material>
        <Material Code="321">Reinforcement Bars</Material>
        <Material Code="322">Fabric And Grid Reinforcing</Material>
        <Material Code="331">Structural Concrete</Material>
        <Material Code="335">Concrete Finishing</Material>
        <Material Code="339">Concrete Curing</Material>
    </Division>
    <Division Description="Masonry" Code="4" MaterialCostValue="140400.00" InstallationCostValue="365040.00" TotalCostValue="505440.00">
        <Material Code="401">Maintenance Of Masonry</Material>
        <Material Code="405">Common Work Results For Masonry</Material>
        <Material Code="427">Multiple-Wythe Unit Masonry</Material>
    </Division>
    <Division Description="Metals" Code="5" MaterialCostValue="737880.00" InstallationCostValue="294840.00" TotalCostValue="1032720.00">

```

```

    <Material Code="505">Common Work Results For Metals</Material>
    <Material Code="512">Structural Steel Framing</Material>
    <Material Code="521">Steel Joist Framing</Material>
    <Material Code="531">Steel Decking</Material>
    <Material Code="551">Metal Stairs</Material>
  </Division>
  <Division Description="Wood, Plastics, and Composites" Code="6" MaterialCostValue="109200.00" InstallationCostValue="66300.00" TotalCostValue="175500.00">
    <Material Code="611">Wood Framing</Material>
    <Material Code="616">Sheathing</Material>
    <Material Code="648">Wood Frames</Material>
  </Division>
  <Division Description="Thermal and Moisture Protection" Code="7" MaterialCostValue="84240.00" InstallationCostValue="93600.00" TotalCostValue="177840.00">
    <Material Code="721">Thermal Insulation</Material>
    <Material Code="722">Roof And Deck Insulation</Material>
    <Material Code="726">Vapor Retarders</Material>
    <Material Code="751">Built-Up Bituminous Roofing</Material>
    <Material Code="753">Elastomeric Membrane Roofing</Material>
    <Material Code="765">Flexible Flashing</Material>
    <Material Code="771">Roof Specialties</Material>
    <Material Code="791">Preformed Joint Seals</Material>
    <Material Code="792">Joint Sealants</Material>
  </Division>
  <Division Description="Openings" Code="8" MaterialCostValue="288600.00" InstallationCostValue="138840.00" TotalCostValue="427440.00">
    <Material Code="812">Metal Frames</Material>
    <Material Code="813">Metal Doors</Material>
    <Material Code="814">Wood Doors</Material>
    <Material Code="851">Metal Windows</Material>
    <Material Code="871">Door Hardware</Material>
  </Division>
  <Division Description="Finishes" Code="9" MaterialCostValue="453180.00" InstallationCostValue="767520.00" TotalCostValue="1220700.00">
    <Material Code="922">Supports For Plaster And Gypsum Board</Material>
    <Material Code="929">Gypsum Board</Material>
    <Material Code="930">Tiling</Material>
    <Material Code="965">Resilient Flooring</Material>
    <Material Code="968">Carpeting</Material>
    <Material Code="972">Wall Coverings</Material>
    <Material Code="991">Painting</Material>
  </Division>
  <Division Description="Furnishings" Code="12" MaterialCostValue="165360.00" InstallationCostValue="19500.00" TotalCostValue="184860.00">
    <Material Code="1232">Manufactured Wood Casework</Material>
  </Division>
  <Division Description="Conveying Equipment" Code="14" MaterialCostValue="212160.00" InstallationCostValue="84240.00" TotalCostValue="296400.00">
    <Material Code="1424">Hydraulic Elevators</Material>
    <Material Code="1428">Elevator Equipment And Controls</Material>
  </Division>
  <Division Description="Fire Suppression" Code="21" MaterialCostValue="26520.00" InstallationCostValue="17940.00" TotalCostValue="44460.00">
    <Material Code="2105">Common Work Results For Fire Suppression</Material>
    <Material Code="2111">Facility Fire-Suppression Water-Service Piping</Material>
  </Division>

```



```

    <Material Code="2113">Fire-Suppression Sprinkler Systems</Material>
  </Division>
  <Division Description="Plumbing" Code="22" MaterialCostValue="978900.00" InstallationCostValue="1035840.00" TotalCostValue="2014740.00">
    <Material Code="2205">Common Work Results For Plumbing</Material>
    <Material Code="2207">Plumbing Insulation</Material>
    <Material Code="2211">Facility Water Distribution</Material>
    <Material Code="2213">Facility Sanitary Sewerage</Material>
    <Material Code="2214">Facility Storm Drainage</Material>
    <Material Code="2234">Fuel-Fired Domestic Water Heaters</Material>
    <Material Code="2241">Residential Plumbing Fixtures</Material>
    <Material Code="2242">Commercial Plumbing Fixtures</Material>
  </Division>
  <Division Description="Heating, Ventilating, and Air Conditioning (HVAC)" Code="23" MaterialCostValue="309660.00" InstallationCostValue="177840.00"
  TotalCostValue="487500.00">
    <Material Code="2305">Common Work Results For HVAC</Material>
    <Material Code="2313">Facility Fuel-Storage Tanks</Material>
    <Material Code="2321">Hydronic Piping And Pumps</Material>
    <Material Code="2352">Heating Boilers</Material>
    <Material Code="2364">Packaged Water Chillers</Material>
    <Material Code="2382">Convection Heating And Cooling Units</Material>
  </Division>
  <Division Description="Electrical" Code="26" MaterialCostValue="257400.00" InstallationCostValue="411840.00" TotalCostValue="669240.00">
    <Material Code="2605">Common Work Results For Electrical</Material>
    <Material Code="2624">Switchboards And Panelboards</Material>
    <Material Code="2627">Low-Voltage Distribution Equipment</Material>
    <Material Code="2628">Low-Voltage Circuit Protective Devices</Material>
    <Material Code="2632">Packaged Generator Assemblies</Material>
    <Material Code="2651">Interior Lighting</Material>
  </Division>
  <Division Description="Communications" Code="27" MaterialCostValue="6240.00" InstallationCostValue="13260.00" TotalCostValue="19500.00">
    <Material Code="2711">Communications Equipment Room Fittings</Material>
    <Material Code="2715">Communications Horizontal Cabling</Material>
  </Division>
  <Division Description="Electronic Safety and Security" Code="28" MaterialCostValue="32760.00" InstallationCostValue="11700.00" TotalCostValue="44460.00">
    <Material Code="2831">Fire Detection And Alarm</Material>
  </Division>
  <Division Description="Earthwork" Code="31" MaterialCostValue="9360.00" InstallationCostValue="30420.00" TotalCostValue="39780.00">
    <Material Code="3122">Grading</Material>
    <Material Code="3123">Excavation And Fill</Material>
  </Division>
</RSMaterialDivisions>
<Notes />
<ListDate>2014-08-27</ListDate>
</Project>
```




Appendix C – CRM Integration XML format version 1.3 export schema

Introduction

This section contains a link to the CRM Integration XML format version 1.3 export schema.

CRM Integration XML format version 1.3 export schema

Click on the link below to open the CRM Integration XML format version 1.3 export schema in your system's default browser:

<http://insight.reedconstructiondata.com/schemas/schDataLinkConfV1.3.xsd>