

How Your House Works

By Charlie Wing

ISBN-13: 978-0-87629-015-6

Catalog No.: 67351

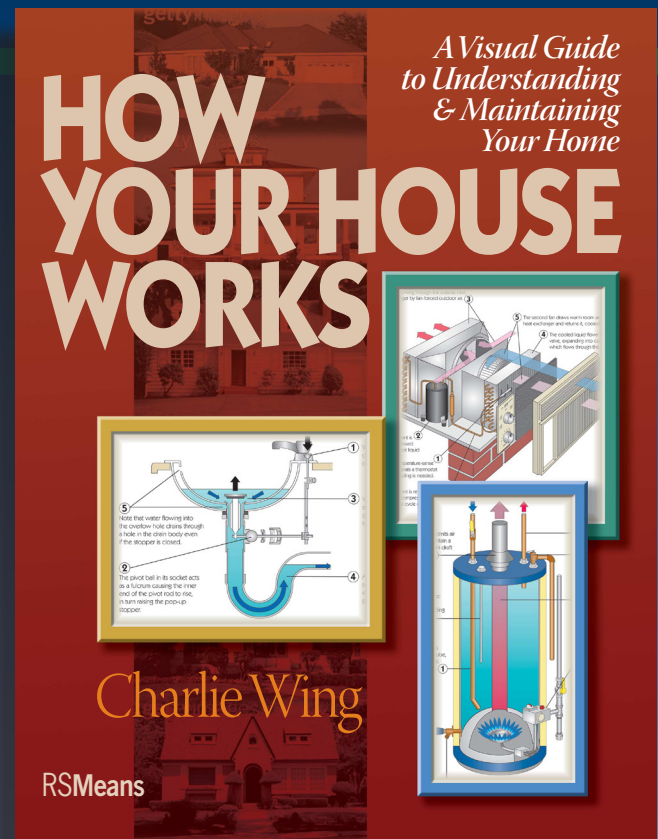
Softcover

8.5" x 11"

Price: \$21.95

Editorial contact: Andrea Sillah

Email: andrea.sillah@reedbusiness.com



About the Book

Market

A time-saving reference, not only for homeowners and new construction experts, but also for contractors who need to check or repair an item that's not their specialty.

Description

This unique, all-illustrated guide shows how a home's appliances, fixtures and building systems work, common malfunctions, and how to trouble-shoot a problem. Easy-to-understand explanations and see-through, cross-section drawings describe how things are put together and how they function—what to check if they don't work, and what a homeowner can do that might save having to call in a professional. The book can also help readers understand building systems, materials, appliances, and fixtures if they're building a new house or remodeling.

Virtually everything is included:

- Electrical—circuit breakers and grounding, service, outlets, lamps and fixtures.
- Heating and air conditioning—gas, electrical and oil—ductwork and piping, thermostats, central and window AC units, humidifiers and dehumidifiers, and air filtering systems.
- Plumbing—kitchen and bath fixtures, piping, water heaters, traps and vents, septic tanks, pumps, and water softener systems—even sprinkler systems and swimming pool filters/heaters.
- Major household appliances—in the kitchen and laundry.
- Foundation, framing, doors and windows—including issues like drainage and radon, types of framing and how it supports the house, and all types of doors and windows.

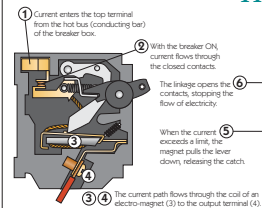
RSMMeans

About the Author

Charlie Wing has written and co-authored more than 20 books on home repair and improvement. An MIT graduate, Charlie was founding and technical editor for *Smart Homeowner* magazine, and developed and hosted a national PBS series on home remodeling for energy efficiency. He has been a guest more than 400 times on home improvement radio and television shows, including on the Discovery Channel, PBS and NBC's "Today Show."

Circuit Breakers & Fuses

Magnetic Circuit Breaker

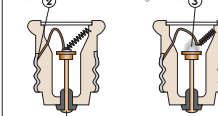


How They Work

Fuse

The current is conducted through the center post, through a bead of solder, then through the wire to the shunt.

The current heats the solder. When the current exceeds the limit, the solder melts, and the spring pulls the wire away, breaking the circuit.



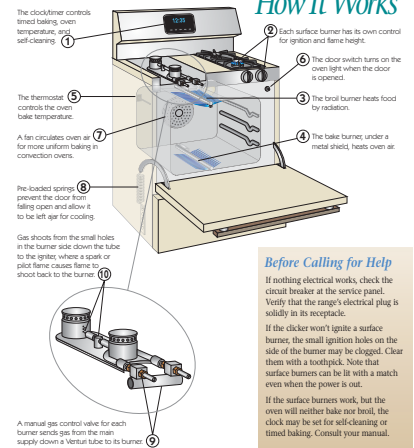
Befo

If the look is Blown Either metal Circuit obvious the wear is allm flip ca again, circuit open a and the proble

120 & 240 VAC, Circu

Gas Range/Oven

How It Works



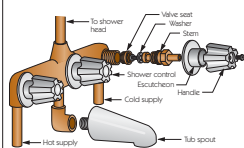
Before Calling for Help

If nothing electrical works, check the circuit breaker at the service panel. Verify that the range's electrical plug is solidly in its receptacle. If the clicker won't ignite a surface burner, the small ignition holes on the side of the burner may be clogged. Clear them with a toothpick. Note that surface burners can be lit with a match even when the power is out. If the surface burners work, but the oven will neither bake nor broil, the clock may be set for self-cleaning or timed baking. Consult your manual.

Electric Range/Oven, Gas Range/Oven 115

Tub/Shower Control

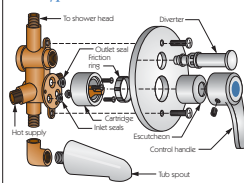
Compression Type



Ho

Tub/shower sink faucet exception. Compress have separate supply, depending on the type of the diverter (temperature) outlet (B). The diverter the tub

Disk Type



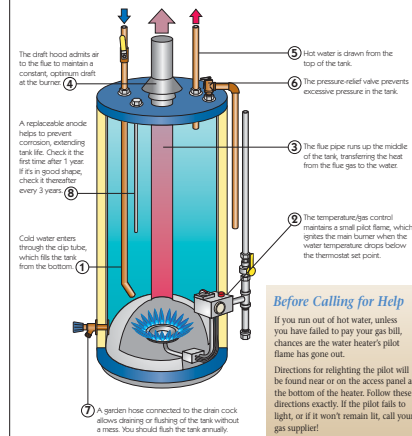
Before Calling a Plumber

If your tub/shower control has two or three handles, it utilizes compression valves. See page 19 for troubleshooting. If the tub/shower control has a single handle, it likely contains a disk. In that case, see page 18 for further direction.

Tempering Valve, Tub/Shower Control 21

Gas Water Heater

How It Works



Before Calling for Help

If you run out of hot water, unless you have failed to pay your gas bill, chances are the water heater's pilot flame has gone out. Directions for relighting the pilot will be found near or on the access panel at the bottom of the heater. Follow these directions exactly. If the pilot fails to light, or if it won't remain lit, call your gas supplier!

Electric Water Heater, Gas Water Heater 87

About RSMeans

RSMeans, a product line of Reed Construction Data, has been the nation's leading publisher of construction cost information and reference data for more than 60 years. The company provides publications, data, seminars, and consulting services for building design, construction, and facilities professionals, as well as the insurance industry and municipal and government agencies throughout the United States and Canada.