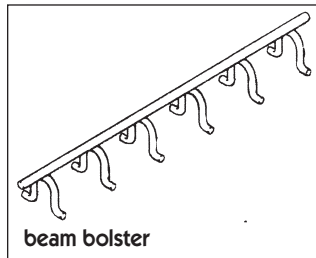


beam bearing plate A metal plate positioned under the end of a beam to distribute the reaction load over a larger area. When used under a column, it is called a *loose plate*.

beam blocking Covering or enclosing a beam, joist, or girder to make it appear larger than it really is.

beam bolster A rod or heavy wire device used to support steel reinforcement in the formwork for a reinforced concrete beam.



beam bottom The soffit of a beam.

beam box See wall box.

beam brick A lintel made of brick courses, often held together by metal straps.

beam ceiling A type of construction in which the structural and/or ornamental overhead beams are left exposed to view from the room below.

beam column A structural member that transmits an axial load as well as a transverse load.

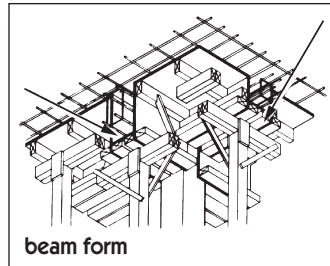
beam compass An instrument comprising a small horizontal bar with two vertical components that can slide along it. One carries a sharp-pointed tip and is held by the user in a stationary position. The other carries a pencil tip and is moved around the first to draw circles or arcs of circles for full-size working drawings.

beam fill (beam filling)

Masonry, brickwork, or concrete placed between floor or ceiling joists to stiffen the joists and provide fire resistance.

beam filling See beam fill.

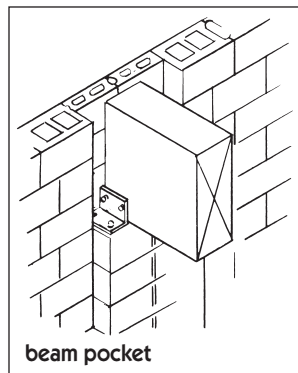
beam form A retainer or mold constructed to give the necessary shape, support, and finish to a concrete beam.



beam hanger (beam saddle) **1.** A wire, strap, or other hardware device used to hang beam forms from another structural member. **2.** In timber construction, a strap, wire, or stirrup used to support a beam.

beam haunch A poured concrete section that continues beyond a beam to support the sill.

beam pocket **1.** A space left open in a vertical structural member to receive a beam. **2.** An opening in the column or girder form where forms for an intersecting beam will be framed.



beam saddle See beam hanger.

beam side The side panels of a form for a concrete beam.

beam spread A measure of the dispersion of a beam of light. Expressed as the

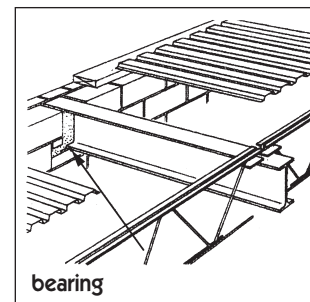
angle between two directions in the plane in which the candlepower is equal to a specified percent (usually 10%) of the maximum candlepower in the beam.

beam test A method of measuring the flexural strength (modulus of rupture) of concrete by testing a standard unreinforced beam.

bearer **1.** A horizontal member of a scaffold on which the platform rests and which may be supported by ledgers.

2. Any load-supporting horizontal structural member. **3.** Any device that provides support for a landing or window in a stair. **4.** In balloon framing, the ribbon board on which the joists for the second floor rest.

bearing **1.** That section of a structural member, such as a column, beam, or truss, that rests on the supports. **2.** A device used to support or steady a shaft, axle, or trunnion. **3.** In surveying, the horizontal angle between a reference direction, such as true north, and a given line. **4.** Descriptive of any wall that provides support to the floor and/or roof of a building.



bearing bar **1.** A wrought-iron bar used on masonry to offer a level support for floor joists. **2.** A supporting bar for a grating.

bearing capacity The maximum unit pressure that soil or other material can withstand without failure or excessive settlement.